



Features:

- Sampling frequency reach up to 160MHz
- Color TFT LCD display
- Memory up to 1024 A scanned images, parameters and 64000 thickness values
- 32 detecting channels are available with separated detecting parameters and DAC curve in every channel
- Equipped with gate setting and alarming function
- Two scanning modes: A scan and B scan
- Auto gain and manual B scanning
- USB 1.1, fullspeed communication port available
- Can be connected with PC to print out result
- Pulser voltage adjustable
- Two measuring unit: mm/inch
- Three detecting modes: single-probe, dual-probe and transmission
- Real time waveform display and review
- Four rectify ways: positive half-wave, negative half-way, full wave and radio frequency

Technical Specification

Scanning range	2.5mm~9999mm
Frequency	0.1MHz~25MHz
Gain range	0dB~110dB
Vertical linearity error	≤3%
Horizontal linearity error	≤0.2%
Dynamic range	≥34dB
Rectification	Positive half wave, negative wave, full wave, and RF
Sensitivity leavings	≥60dB
D-Delay	-20μs~3400μs
P-Delay	0μs~99.99μs
Scanning resolution	0.1mm(2.5mm~99.99mm);1mm(100mm~9999mm)
Sound velocity	1000m/s~9999m/s
Overall dimension	243 × 173 × 85mm
Weight	1500g
Test mode	Pulse-echo, dual and through transmission
Damping	50 ohms,100 ohms, 150 ohms
Unit	mm/inch
Interface	RS232/USB
Printer	EPSON ink-jet printer
Temperature	-10~40
Power supply	Li battery 4 × 3.6V
Humidity	20%~90%RH

Standard Delivery

Main unit	1
Couplant	1
Power adaptor	1
Power cable for power adaptor	1
Neck strap	1
Connecting cable	1
Straight probe	1
Angle probe	1
Flash disk	1
Instruction manual	1
TIME certificate	1
Warranty card	1

Optional Accessory

Connecting cable
Dataview software
EPSON ink-jet printer
Various probes(see page 48)

ULTRASONIC FLAW DETECTOR TUD300/310/320/360

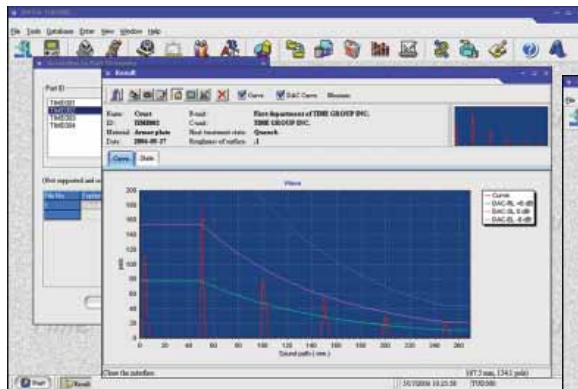
ISO 9001

Dataview for TIME ultrasonic flaw detector TUD300/310/360

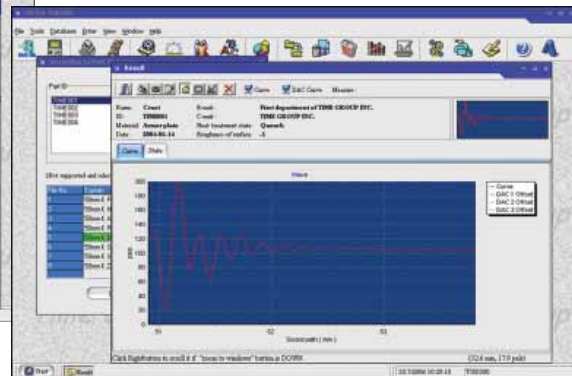
Editing and management of saved data and echoes

Edit and print of examination report as users' demand

Dataview for TUD310 and TUD360 is equipped with real-time display of detecting waves on the computer screen



Review of echo



Scroll and review data for examination

TUD300 ULTRASONIC EXAMINATION REPORT									
BASIC	Job number	20060517	Technician	Yan	B-SET	Plant Department of TIME GROUP INC.			
	Date	2006-05-17	Test location		C-SET	TIME GROUP INC.			
INSPECTION	Name	Crack	Material	Aluminum plate	Heat treatment	Quench			
	ID	TUD300	Material	Aluminum plate	Heat treatment	Quench			
PROBE	TYPE	PH	Model	PH	Range	0.1			
	SIZE	20	DI	20					
	ANGLE	45	ANGLE	0 deg					
	S-VALUE	0.000 mm	P-VALUE	0.000					
	T-VALUE	0.000	GAIN	11.40					
	RANGE	120.00 mm	LOGIC	POD					
	MINVEL	100.00 mm	START	20.00 mm					
	D-VALUE	0.00	WIDTH	20.00 mm					
ADJUSTMENT	DAMPING	20	ATTEN	40%					
	RECTIFY	POD	START	20.00 mm					
	REJECT	3%	WIDTH	40.00 mm					
	T-VALUE	10.00 mm	RYRDM	11.1%					
INSPECTION DATA	INW	32.1%	DNW	110.0%					
	N	10.00 mm	F	0.00 mm					
	K	1.04	A	20.00 mm					
REMARK	Orientation		Direction	Horizontal					
	Vertical		Remark						
STANDARD	Method		Length						
	Equipment		Grade						
RESULTS	Principal	Day	Operator	System	Receiver	Date			

Edit and print of Examination Report

TIME ultrasonic probes

TIME supplies various kinds of ultrasonic probes as customer's requirements



EZTECH
Instruments

The Art Of Measurements

www.WorldTesters.com

sales@eztech-usa.com