



Features:

- Equipped with 55 kinds of parameters that conform to ISO/DIN/ANSI/JIS standards
- Measurement of roughness, waviness and primary profile with a wide measuring range
- Integrated design for convenient use
- LCD, digital/graphic display
- Skidded / skidless pickup makes it so efficient to evaluate curved surface roughness
- Equipped with advanced Windows software
- Outputting of data to PC by using RS232 or USB cable is available as well as printing out by printer

Technical Specification

Assessed profile	R (Roughness), W (Waviness), P (Primary profile)
Measuring Range	$\pm 400 \mu\text{m}$, $\pm 40 \mu\text{m}$, $\pm 4 \mu\text{m}$
Filtering	RC, PCRC, Gauss, D-P, ISO 13565
Parameters	R: Ra, Rp, Rv, Rt, Rz, Rq, Rsk, Rku, Rc, RS, RSm, Rlo, RHSC, Rpc, Rmr(c), RzJIS, R3y, R3z W: Wa, Wp, Wv, Wt, Wz, Wq, Wsk, Wku, Wc, WS, WSm, Wlo, WHSC, Wpc, Wmr(c), WzJIS P: Pa, Pp, Pv, Pt, Pz, Pq, Psk, Pku, Pc, PS, PSm, Plo, PHSC, Ppc, Pmr(c), PzJIS Rk: Rk, Rpk, Rvk, Mr1, Mr2
Tolerance	$\leq \pm 5\%$
Cutoff length	0.08mm, 0.25mm, 0.8mm, 2.5mm, 8mm
Max. tracing length	40mm
Analysis graphs	ADC, BAC
Evaluation length	1L-5L
Max. resolution	0.0001 μm
Display	LCD
Memory	10 groups of primary data
Data output	RS232, USB
Power supply	Li battery / AC adapter
Dimensions	409 x 96 x 98mm
Weight	2.3Kg

Standard Delivery

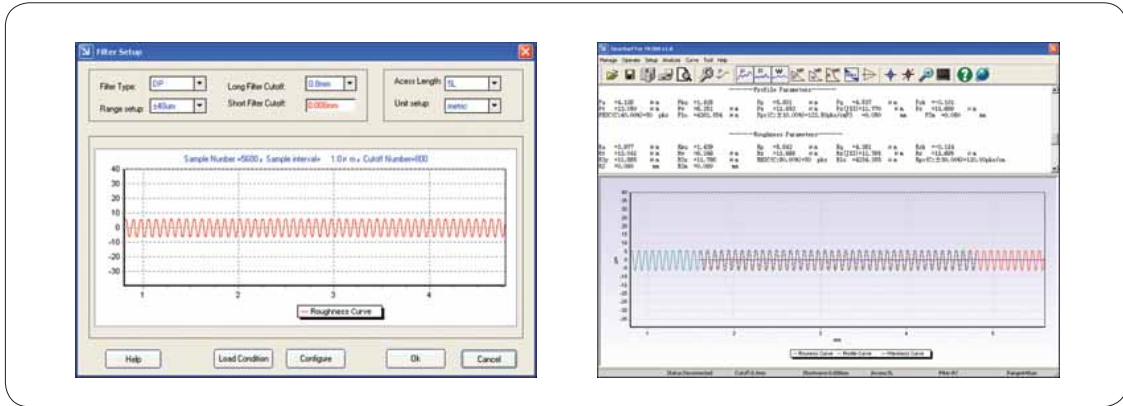
Main unit	1
Pickup	1
Specimen Ra 3.2	1
Screwdriver	1
RS232 Connecting cable	1
Power adapter 9V/4A	1
Instruction manual	1
Warranty card	1
TIME certificate	1

Optional accessories

- Printer TA230 (see page 67)
- PC software (TIMESurf for TR300)

TIMESurf for TR300 software

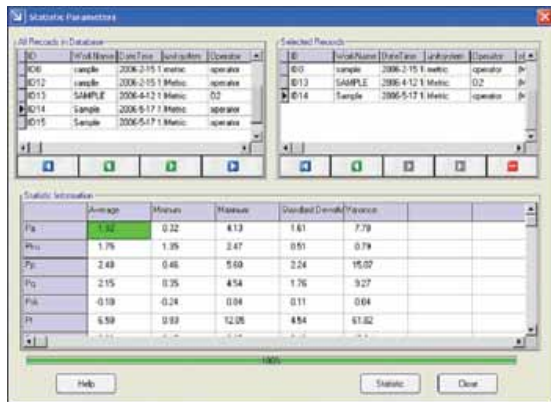
TIMESurf for TR300 Software works for TIME advanced surface form tester TR300 managing, analyzing, printing and searching measured data and graphs



Features:

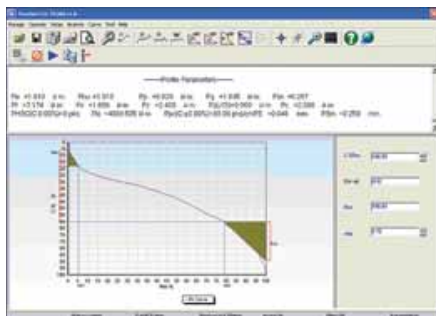
Operator is allowed to perform evaluation of mean value, max. value, min. value, standard deviation and variance by moving mouse. And the calculation results can be stored in a default Excel file or in a Excel file specified by user

Equipped with powerful data management function. The collected data can be stored as a file or stored in database for user's searching and browse

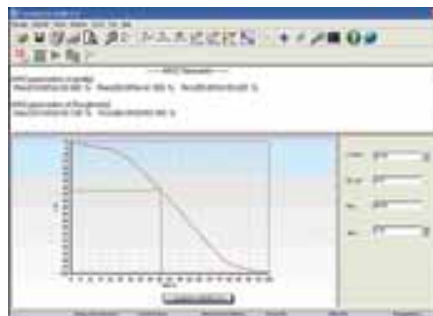


Printing function is designed for operator to make printing report including what is needed about the curves and parameters.

Variety of curves are displayed as well as all selected parameters and measured results. And all views (including graphs, figures and any other things) displayed can be printed out with the advanced printing function.



RK curve



BAC curve

