

CRACK WIDTH GAUGE TC400

ISO 9001



Brief Introduction:

TC400 is used for real time automatic detection of surface crack width on different material structure and real time observation of cracking process. This instrument is a kind of intelligent test equipment possessing the functions of automatic detection, data memory and output.

Features:

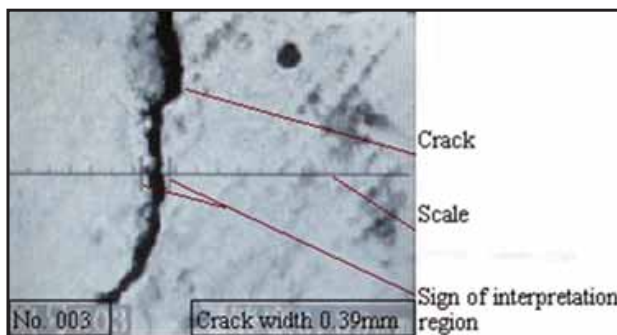
- Direct digital display of crack width
- Real time graphic display
- Automatic interpretation of crack width to improve accuracy
- Designed with constant lighting source for convenience use
- Data view or delete, create testing report
- With USB interface

Technical Specification

Measuring range	0.02 ~ 8.0mm
Accuracy of estimation	0.01mm
Measurement error for measuring line of standard width calibration	± 0.01mm
Memory	1000 test data
Power supply	Li-ion rechargeable batteries
Operating temperature	-10 ~ 40
Relative humidity	<90%

Standard Delivery

Main unit	1
Transducer	1
Charger	1
Signal cable	1
Shoulder strap	1
Tapeline	1
Key	2
Instruction manual	1
TIME certificate	1
Warranty card	1



EZTECH
EZTECH
EZTECH Instruments

The Art Of Measurements

www.WorldTesters.com

sales@eztech-usa.com